

SPECIFICATIONS

Toggles shall conform to A.S.T.M., A570, Grade D or better; toggle bolt to A.S.T.M. A354, Grade BD; hex nut to A.S.T.M. A563, Grade D; rivet to A.S.T.M. A276, Type 304 Condition B.

Plain washers shall be made of steel and shall meet the dimensional requirements of A.N.S.I. B27.2 Type A Plain Washers. Spring lock washers shall meet the requirements of A.N.S.I. B27.1.

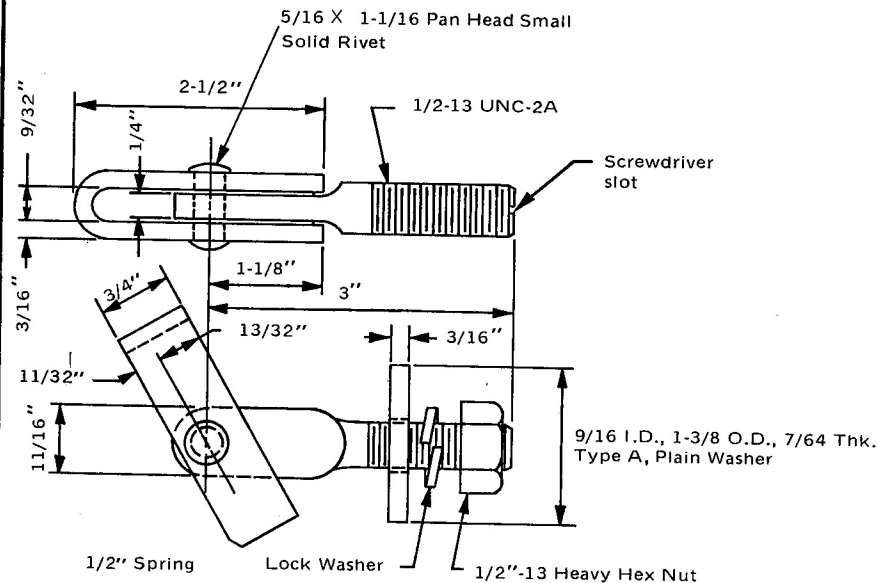
Steel components shall be cadmium plated to A.S.T.M. A165, Type OS, or better.

Required minimum tensile load shall equal 9000 pounds when in open position and tested through a 1" ϕ hole.

Dimensional tolerances not shown or implied are intended to be those consistent with the proper functioning of the part, including its appearance, and accepted manufacturing practices.

INTENDED USE

This toggle bolt is used to connect 5" OD tubular rails to posts in bridge railing designs BR1 (Aluminum) Type A, BR2A (Aluminum) Type A, BR2 (Aluminum) Type A, and BR3A (Aluminum) Type A.



TOGGLE BOLT ASSEMBLY

1/2" TOGGLE BOLT

HM-TF-13

STANDARD

F-25-73